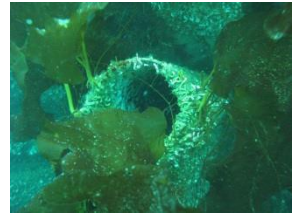




Example on result from our work.

The researchers calculated approximately 10,000 small and large fish and animals in and around our habitat.



Patented

Version

Dimensions

- The units offer great advantages in terms of clean concrete and rock fills, and they represent very modest investments.
- These units provide an excellent habitat where large amounts of marine vegetation, fish and marine animals can live.

- Large amounts of new, nutrient-rich waters will always flow through units, include microorganisms, algae etc.
- Littoral habitat **60m3** and weight **7 - 8 tons**. Should the same result with habitat be achieved using stone or clean concrete structures, between 50 to 100 tons would be required.

Harvesting in shallow and deep water.

- Center unit (habitat 4 tons) is easy to raise and lower with use of ROV and beam.
- The habitat enabling the development of habitat in protected areas as was previously industrialized as mining, offshore wind, oil and gas.

Littoral intentions

- LH makes it possible to build large fields of habitat in order to rebuild and preserve the fish resources in the ocean.
- Climate change leads to warmer water damage coral and seagrass. An alternative is to build habitat in deeper water.
- With LH, can new areas being developed for coral and seaweed.
- With LH can work start making sea parks.
- LH is easy to install without divers.
- LH is tested from Dubai to Hammerfest Norway
- LH is designed to be **REMOVED** after use and can be recycled.

LH 01 Cultivation
(as image over)

- 60 m3 habitat
- 400 m2 growing area

LH 02 Harvester



Dimensions

LH creates new opportunities



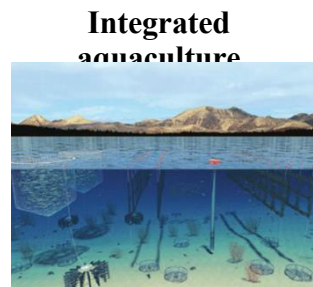
- LH is designed to create new opportunities to harvest on great depths.
- Example, corals and mushrooms



Sea Parks



Fishing spots



Integrated aquaculture



Do wind farms to habitat

Bonus -LH create habitat for fish and sea creatures and limiting damage of seabed and sea grass.

We are working for a sustainable development.



LITTORAL Pte Ltd

- Email: info@littoral.sg
- For urgent matters:
- Email: Yves.dl@deepblue.sg
- Tel: +65 9615 0549

- For Scandinavia, Johannes Kvammen
- Email: johns@kvammen.net
sverre@seacult.no