



Jasri Bay Hideaway Resort

Client Jasri Bay Hideaway Resort

Country Indonesia

Location East Bali

Waterdepth 5 m

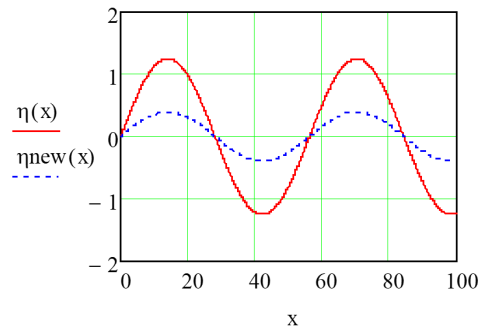
Scope

1. Full engineering and design of the size and location of implementation of the beach protection.
2. Simulation of the resulting effects on the wave height and the wave energy arriving at the beach
3. Team in order to manufacture and install the systems on site
4. Reducing the beach erosion
5. Increasing the Marine Fauna and Flora
6. Being build and installed at the moment

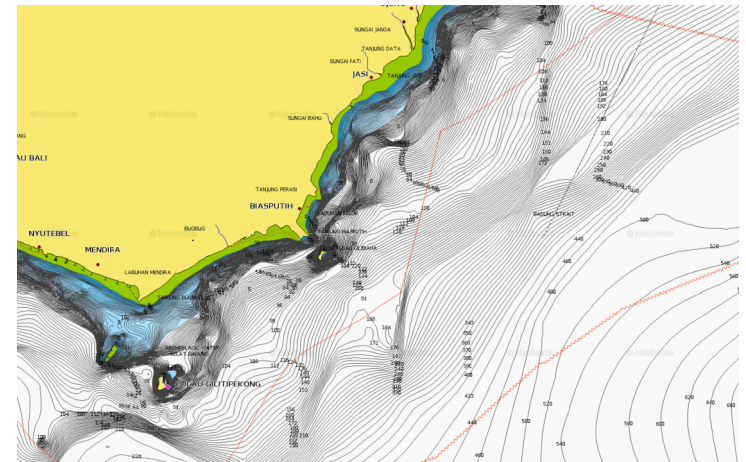
Results to Follow



Wave Profiles of 2.5m Wave height and Period of 6s. With BP placed at 4m depth.



Graph 1. 4m Depth $H=2.5m$ $T=6s$
Red Line: $\eta(x) \rightarrow$ Initial wave
Blue Line (Dotted): $\eta_{new}(x) \rightarrow$ Attenuated wave





NORWEGIAN FYORD-1

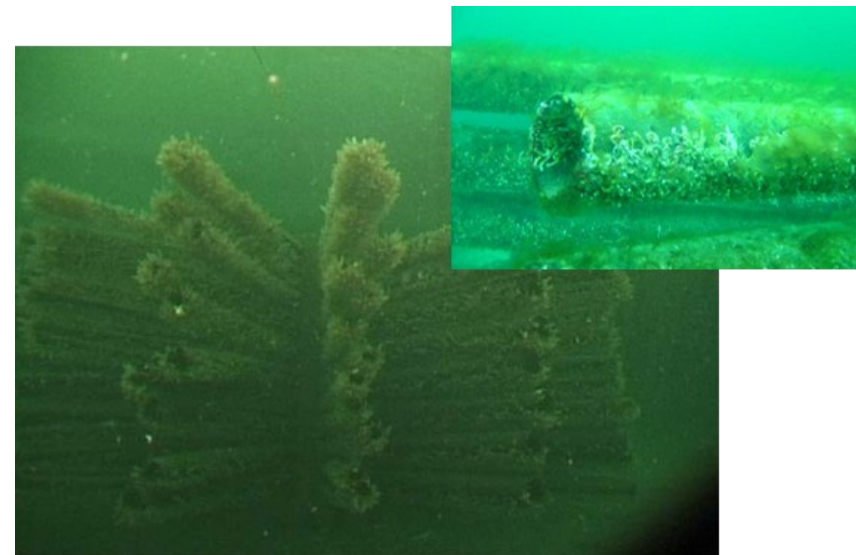
Client	Local Government
Country	Norway
Location	Hammerfest, North Norway
Waterdepth	20 m

Scope

1. Manufacturing of Habitat Reef
2. Delivering of Habitat Reef
3. Installation of the Habitats
4. Review and follow up after 6 months.
5. The system compensated the loss of natural habitats and the loss of kelp , by contributing to the conservation and enhancement of marine diversity.

Results

1. After **3 Months**: Inhabited by high number of juvenile fish, as well as tubeworms, and filamentous and red algae.

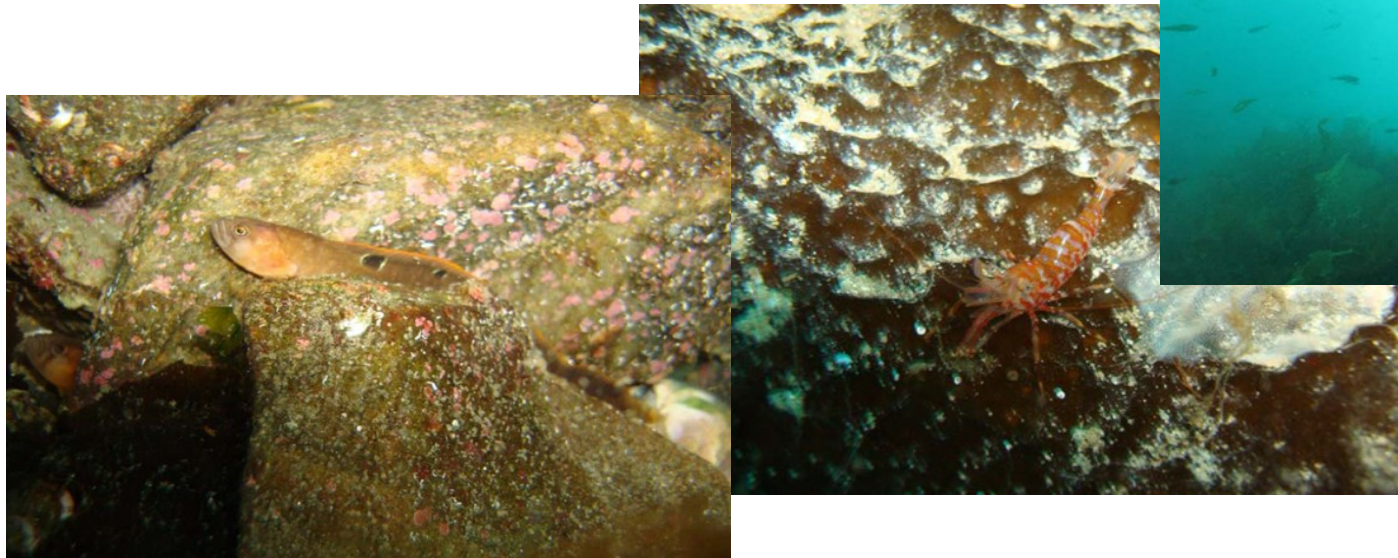




NORWEGIAN FYORD-1

Results

2. After **1 Year**: Sugar kelp had established and partly dominated the top of the reefs. Juvenile fish of saithe and cod can be seen in high number during summer & autumn while small number of scorpionfish and butterflyfish can also be found hiding within the algae.
2. After **3 Years**: Colonization of smaller animals (i.e. shrimps, squat lobsters, snails, starfish, sea cucumbers, etc.) were increasing.





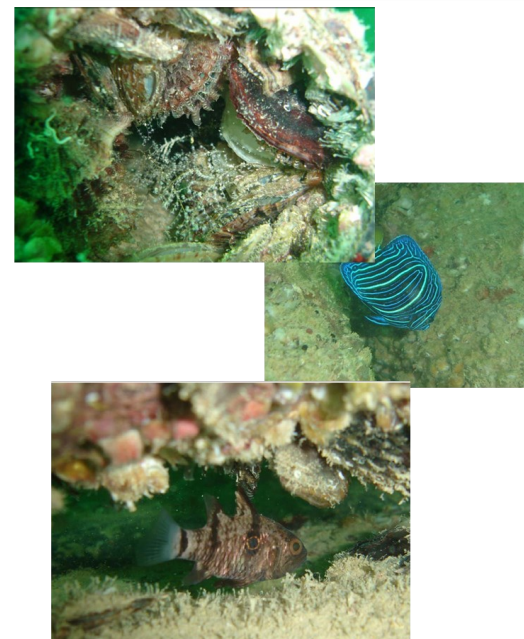
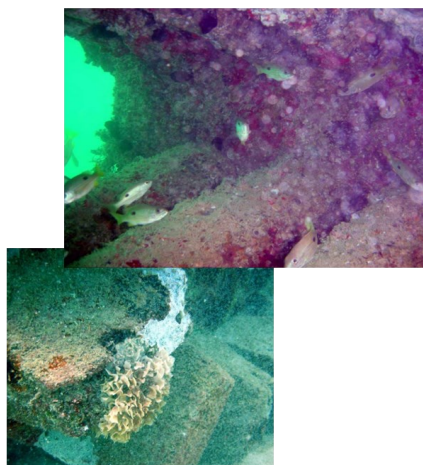
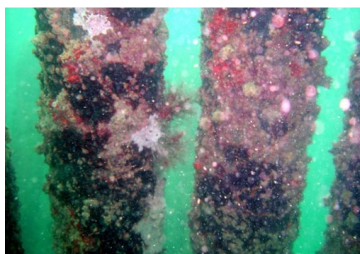
PALM DUBAI

Client	PALM UAE
Country	UAE
Location	Dubai
Waterdepth	20 m

Scope

1. Manufacturing of Habitat Reef
2. Delivering of Habitat Reef
3. Installation of the Habitats
4. Review, monitoring and follow up by Reef expert for 2 years.

Results See pictures



GROWTH PROCESS : 6MONTHS

1-YEAR

2-YEAR



Kota Kinabalu Habitat

Client Local Government
Country Malaysia
Location Kota Kinabalu
Waterdepth 25 m

Scope

1. Full engineering and design of the size and location of implementation of the Habitats
2. Stability calculations against extreme weather
3. Team in order to manufacture and install the systems on site
4. Increasing the local marine Fauna and Flora
5. Will be installed in 2022

Results to Follow

